

CMD Environmental  
Farrell St. Kells, Co. Meath  
E15

EN 12566-3

Small wastewater treatment systems for up to 80 PT  
AQUAmax<sup>®</sup>

Model: Concrete

Treatment efficiency:

Efficiency of treatment for the tested control system daily load of BOD <sub>5</sub> = 2.77 kg/d	CO <sub>2</sub>	97.8%
	BOD <sub>5</sub>	97.8%
	NH <sub>4</sub> -N	91.3%
	NH <sub>4</sub> -N	90.2%
	N <sub>T</sub>	73.0%

Treatment capacity (maximum):

Maximum organic daily load (BOD <sub>5</sub> )	0.26 - 2.0 kg BOD <sub>5</sub> /d
Maximum hydraulic daily flow (Q <sub>h</sub> )	0.6 - 2.0 m <sup>3</sup> /d

Weak hygiene

Good

Outfall resistance

Good

Durability

Good

\* Figures are based on a 10°C

Available information and literature on our website: www.cmdenv.com

Company: Environmental Technology Ltd  
EQUATEC Ltd  
EQUATEC Ltd  
EQUATEC Ltd



Start report No. 0003 - 01 11 10 100 00 (p.p.)

Order: 100-010101-010101-010101-010101

Contract: 100-010101-010101-010101-010101

Date order: 01/11/2010

Start date: Start of works on report 01/11/2010 - 01/11/2010

General report only (see EN12566-3) 12566-3  
Detailed hydraulic report 12566-3  
Detailed efficiency report (optional) 12566-3

Detailed efficiency report (optional) 12566-3

Efficiency 97.8% BOD<sub>5</sub>

91.3% NH<sub>4</sub>-N

90.2% NH<sub>4</sub>-N

73.0% N<sub>T</sub>

0.26 - 2.0 kg BOD<sub>5</sub>/d

0.6 - 2.0 m<sup>3</sup>/d

0.6 - 2.0 m<sup>3</sup>/d

0.6 - 2.0 m<sup>3</sup>/d

0.6 - 2.0 m<sup>3</sup>/d

0.6 - 2.0 m<sup>3</sup>/d

0.6 - 2.0 m<sup>3</sup>/d

0.6 - 2.0 m<sup>3</sup>/d

0.6 - 2.0 m<sup>3</sup>/d

0.6 - 2.0 m<sup>3</sup>/d

# CMD Shop

Parts for all makes of sewage and rainwater systems

**X-AJE P**  
Self-priming centrifugal pump with/without electronic system.  
Technopolymer flange

**Distribution boxes**      **GXR, GXV**  
(suitable for all sewage systems)  
Submersible Pumps in stainless steel

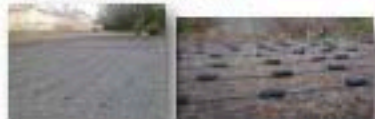
**Control unit acontrol 2010**      **Universal Filter**  
Internal/external allows up to 100 water yield

**Submersible pump ATBHIT 1**      **Submersible aerator AQUA 5**

**ET60 BLOWER**      **ET80 BLOWER**

## PIPE KITS FOR PRESSURIZED PERCOLATION AREAS

CONCRETE PUMP CHAMBERS & PUMPS TO SUIT INDIVIDUAL PERCOLATION AREAS.  
PIPE KITS MADE TO ORDER WITH HOLES DRILLED  
PIPES LEFT READY FOR EASY ASSEMBLY.  
INSPECTION VALVE BOXES AND VALVES.  
PIPES SIZES FROM 25 MM TO 63MM



### PRESURIZED PERCOLATION PIPES



### VALVE BOX AND VALVE



Advanced **AQUAmax**<sup>®</sup>  
Effective. Innovative. Sustainable.

The Solution to your Pollution.....

# CMD Environmental LTD.



**Concrete Sewage Treatment Units & EN Certified Septic Tanks**

BOD's 97.8% Efficiency (suitable for N.I.)

**Domestic & Commercial**

**SALES**  
Gene O' Reilly 087 2233 448  
Claran Mc Donagh 087 2626 382

**Tel:** 046 - 9240237 / 9241500    **Email:** cmdsewage@eircom.net    **Web:** www.cmdenvironmental.ie

3 Farrell St. Kells, Co. Meath

Advanced **AQUAmax**<sup>®</sup>      EN Cert EN12566-3  
Effective. Innovative. Sustainable.      (New European Standard)

Tank installation by our crane lorries

The above information may be subject to change without notice, due to the continual product development of ATD environmental Technologies Limited.

**Tel:** 046 - 9240237 / 9241500

3 Farrell St. Kells, Co. Meath

# Aquamax sewage treatment units

## What You Get:\*

There has been no affordable technology for high quality waste water treatment until now. The fully automated Aquamax System designed with the environmentally aware customer in mind, unit does not run continually as the population of the system can be adjusted from 2 PE to 10 PE or from 8 to 15 on our larger systems.

- \* State of the art German components and technology; sequence batch reactor.
- \* Significantly lower effluent (treated water) resulting from a well maintained Aquamax unit.
- \* A low maintenance product that can be maintained and operated by the home owner, pump and aerator are mounted on a single frame that can be easily lifted from the tank for servicing, system does not need emptying to complete this unlike other systems that have their components mounted on the bottom of their tanks.
- \* Single 3 chamber precast concrete tank with CE Certification (all systems must have this from 1st July 2013), our systems are made in one large tank (EG 10 PE System 7000 LTRS) which ensures that we can control smells and treat both primary and treatment chambers more efficiently, and unlike some dual tanks systems, less ground works, and less desludging.
- \* Our tanks do not require to be backfilled with concrete unlike some plastic systems which need support, our tanks are typically twice as large as some plastic systems.
- \* Automated holiday and weekend mode; this shuts down the system automatically to conserve electrical power usage, this comes as standard.
- \* Aquamax systems reduce nitrogen by denitrification (only sequence batch reactors can do denitrification), this is because our systems don't aerate continually.
- \* Sample bottle for authorities to inspect or for you the customer to see how your system is performing, some systems don't like you to see what is being discharged.

*AQUAMax\* is the most effective system for your new home or if you are upgrading your existing septic tank.*

## "Our First Class Service to you"

CMD is a family business and operate from Kells Co. Meath and have responsibility for sales and service in the 32 counties including N.Ireland. Call for advice anytime as we operate 24/7 and can visit your site at your convenience. Installation and service by fully trained staff, our staff are fully trained in ATB factory in Porta Westfalica in Germany, Aquamax use only German made components. 2 years warranty on electrical and mechanical components. Our systems come with a full guarantee that we are CE Certified and that both the Aquamax unit and the tank have been tested successfully and have acquired the EN Certification EN 12566-3 and have an efficiency of 97.8 on BOD5 which is also acceptable to the Northern Ireland authorities, (Efficiency must be above 97.5). Tanks are delivered country wide with our self unloading crane trucks into your excavated hole, units come as standard with 25 mtrs cable, (extra cable on request). CMD offer maintenance contracts to suit individual needs if required. CMD offer full co operation with your architect or engineer and provide planning reports if required free of charge.

**BOD's 97.8% Efficiency (suitable for N.I.)**

To talk through your options and to order your AQUAMax\*  
Call 087-2525362



CE Certified Concrete Tank  
**Peace of Mind**

AQUAMax, takes you to a new level  
of waste-water treatment



Ready for the Future!

# THE C.M.D. GALAXY RAINWATER HARVESTING SYSTEM

## HOW IT WORKS:

1. Rainfall on the roof of your house is collected through the guttering and stored in an underground precast tank.
2. Water is filtered on entering the tank for leaf and other materials from nature. Water is then pumped up to a header tank. For use within the home, for example - flushing toilets, washing machines and outdoor taps.

## WHAT YOU GET:

1. Concrete Water Tank - 7000 litres upwards.
2. Preliminary Cleaning Filter with sediment outflow.
3. Calmed Inlet - reduces sediment disruption.
4. Overflow Siphon - removes any material which floats on top of the water, to a soak hole.
5. Submersible Pump - up to 4 bar pressure with up to 50 metres head.
6. Ultra Violet Light - optional at an extra cost / disinfects the water.
7. Final Sediment Filter - optional at an extra cost / removes sediment.
8. Top Up Valve - optional at an extra cost / if the tank empties below 600mm this valve opens to keep water at this level from mains.

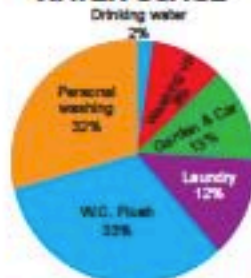


## Advantages

- Helps the environment - water conservation as we use more and more water every year. Reduces water bills. Rainwater is a natural resource.
- Meets new council requirements - where every town and city planning applications show a storm water management plan
- Softer Water - up to 50% less detergents used in washing machines and car wash facilities with equipment having a longer life span
- Takes Pressure off bore and wells with poor supplies
- Much better for irrigation for garden centres, fruit production and home irrigation
- No costly water treatment equipment needed (soft water)



## WATER USAGE



source: OFWAT Waterfacts May 2006  
TANK FITTING SERVICE IF REQUIRED

